



1600CFM SERIES

DUAL PRESSURE \ TIER 4 FINAL \ CATERPILLAR & CUMMINS ENGINE \ PORTABLE COMPRESSOR



1600CFM/100 & 150PSI



SPECIFICATIONS

Compressor

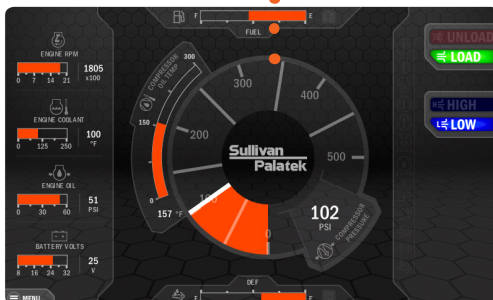
Model	D1600PHCA4	D1600PHCU4
Rated Delivery	1600 CFM (45 m ³ /min)	1600 CFM (45 m ³ /min)
Rated Operating Pressure	100/150 psig (6.9/10.4 Bar)	100/150 psig (6.9/10.4 Bar)
Operating Pressure Range	70-150 psig (4.9 - 10.3 Bar)	70-150 psig (4.9 - 10.3 Bar)
Estimated Weight, Serviced	19,500 lbs	19,500 lbs
Dimensions L x W x H (in")	254.31" x 90.15" x 111.82"	254.31" x 90.15" x 111.82"

Engine

Model	Diesel	Diesel
Make & Model	CATERPILLAR C15 TIER 4 FINAL	CUMMINS QSX 15 TIER 4 FINAL
Idle Speed	1400 RPM	1400 RPM
Fuel Tank Capacity	224 gal (848 L)	224 gal (848 L)
Horsepower @ rated RPM	540 hp	535 hp
Full Load Speed	1800 RPM	2100 RPM
DEF Volume	12.9 gal. (48.8 L)	12.9 gal. (48.8 L)



Sullivan-Palatek Electronic Controller (SPEC)



HOME SCREEN



FEATURES

- » NEW Large 321mm Diameter Twin Screw Gear Drive
- » Air End Manufactured by Sullivan-Palatek Comes With Exclusive Three Year Warranty
- » Automatic 0 to 100% Capacity Control
- » 10" Closed Start, Inlet Valve
- » Ambient Oper. Temp. Range: -40° to + 125°F (-40° to +52°C)
- » 3" Service Connection
- » Oil Level Sight Gauge
- » Caterpillar & Cummins Engine
- » Steel Fuel Tank (TC Certified)
- » Four Point Lifting Bail
- » Dual Axle Running Gear
- » Electric Brakes
- » Adjustable 3" Lunette Eye
- » Noise Level Limited to Maximum of 76 dBA at 7 Meters
- » Automatic Shutdown and Protection System
- » Containment Base
- » Large Service Doors for Easy Maintenance
- » Automatic Blowdown Valve
- » Dual Air Outlets (with Aftercooler option)

CONTROLLER

NEW! Sullivan-Palatek Electronic Controller (SPEC)

Digital Readouts:

- » Compressor temperature
- » Discharge Pressure
- » Engine oil pressure
- » Engine Coolant temperature
- » Voltmeter
- » Tachometer
- » Fuel level - low fuel warning and shutdown
- » Complete engine diagnostic tool
- » Unit converter
- » Multilingual capabilities
- » Waterproof IP66/67
- » Air Filter Service
- » After cooler filter warning

Sullivan-Palatek, Inc.

1201 West US Highway 20
Michigan City, IN 46360

219.874.2497 | sullivan-palatek.com | info@palatek.com

Distributed by:-
Aggressive Air Compressor Co.
24580 Five Mile Rd.
Redford MI 48239
Tel. 313-541-2825
www.aggressive-air.com